

The Extreme Right in Germany and Scandinavia

The Extreme Right in Western Europe

Review
Germany
Scandinavia
Summary

Review
Germany
Scandinavia
Summary

Last week: Austria and Italy

- ▶ Two countries with long Extreme Right traditions
- ▶ At least three very different trajectories
 - ▶ MIS → AN → Il Popolo della Libertà
 - ▶ Lega Nord
 - ▶ FPÖ

Last week's remaining class questions

Mudde 2007

- ▶ Minimum: Nativism
 - ▶ Radical Right: Nativism + authoritarianism
 - ▶ Populist Radical Right (Maximum): Radical Right + Populism
-
- ▶ What do the FN, VB, AN, FT, LN, FPÖ, BZÖ have in common, where are the differences?
 - ▶ Are they members of an ERP family? In which of Mudde's subgroups would they fit?

The Extreme Right in Germany: History

- ▶ Hitler, obviously
- ▶ SRP: A strong Neo-Nazi party (banned in 1952)
- ▶ Long string of smallish parties → NPD (1964)
 - ▶ Impressive dynamics during 1960s
 - ▶ Largely defunct during 1970s/80s
 - ▶ Revival after unification
- ▶ DVU (1971/87)
 - ▶ A phantom party
 - ▶ Owned/dominated by Frey
- ▶ Republicans (1983)
 - ▶ Initially, a CSU breakaway
 - ▶ For a time, the most successful and modern of them all
 - ▶ Now largely defunct
- ▶ Mostly, a history of failure

Policies

- ▶ A fixation with Nazism/Revisionism
- ▶ “German honor” etc., revision of borders ...
- ▶ Most voters don't care much about the past
- ▶ Beneath the surface, strong preference for anti-semitism, traditional racism ...
- ▶ From the 1980s: immigration
- ▶ Republicans the most modern and moderate
- ▶ NPD has recently rediscovered Fascist protectionism (anti-Globalisation)

Electoral results

- ▶ Quite successful in various Land/EP elections
- ▶ Long history of internal division
- ▶ “Three waves”
 - ▶ Postwar
 - ▶ Mid-1960s
 - ▶ 1980s-present
- ▶ Never successful in BT elections
- ▶ Nationally, amongst Western Europe’s weakest parties
- ▶ Voters: the usual suspects

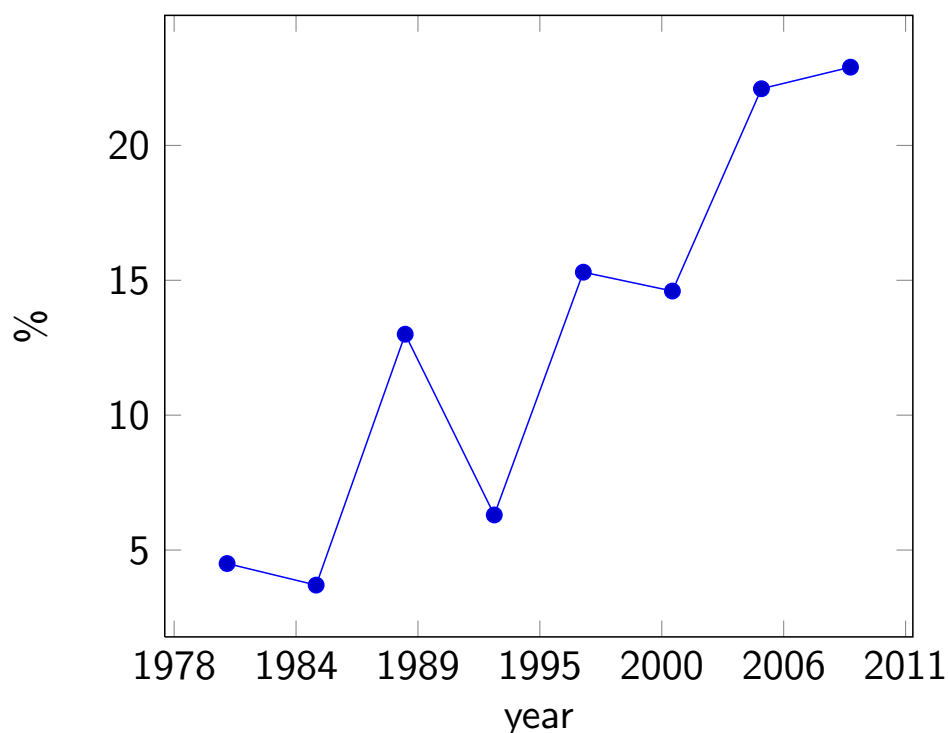
The Extreme Right in Scandinavia: History

- ▶ “Scandinavia”: Denmark, Sweden, Norway, Finland
- ▶ Close links between states, Danish, then Swedish domination
- ▶ Close links with Germany (Denmark, Sweden)
- ▶ Complex situation during WW II
 - ▶ Denmark occupied in 1943, but resistance
 - ▶ Sweden neutral, but in forced co-operation with Germany
 - ▶ Norway occupied in 1940, but ongoing resistance
 - ▶ Finland allied to Germany from 1941, turned against Germany in 1944
- ▶ PPs in Denmark/Norway during 1970s; DF (95-)
- ▶ No links with Neo-Nazi movements/collaborators, discovered immigration during 1980s
- ▶ New Democracy in Sweden (91-2000), SD (1988-)
- ▶ True Finns in Finland (1995)

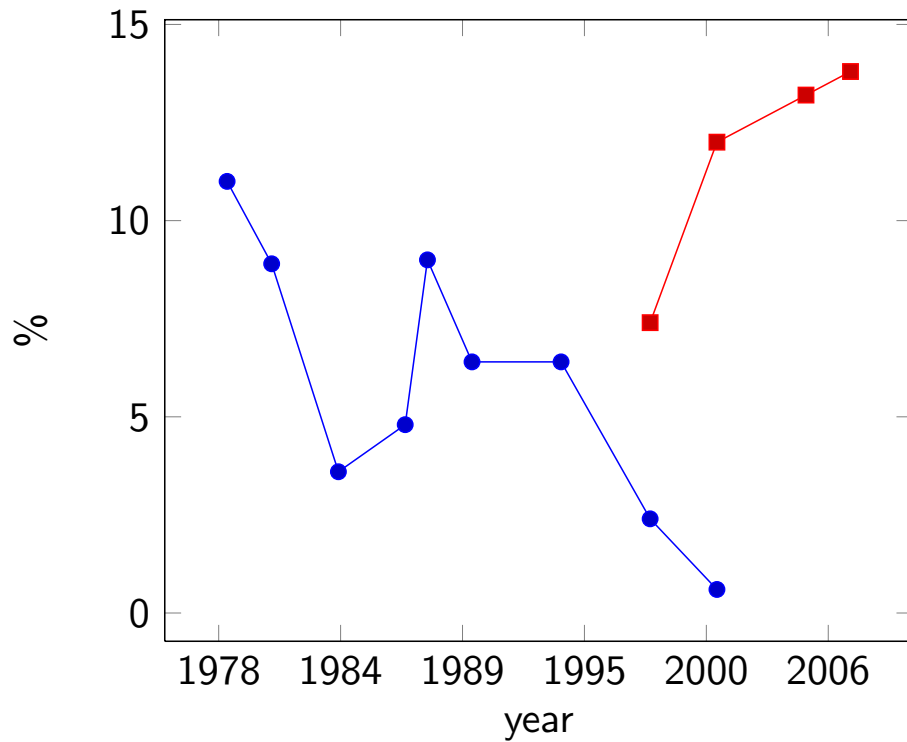
Policies

- ▶ Progress Parties: tax cuts, anti-welfare state
- ▶ *Immigration*
- ▶ Socially liberal (Progress Parties, New Democracy), socially conservative (DF)
- ▶ Nationalist (in a Scandinavian context)
- ▶ Sceptical of EU
- ▶ Populist, in favour of reform

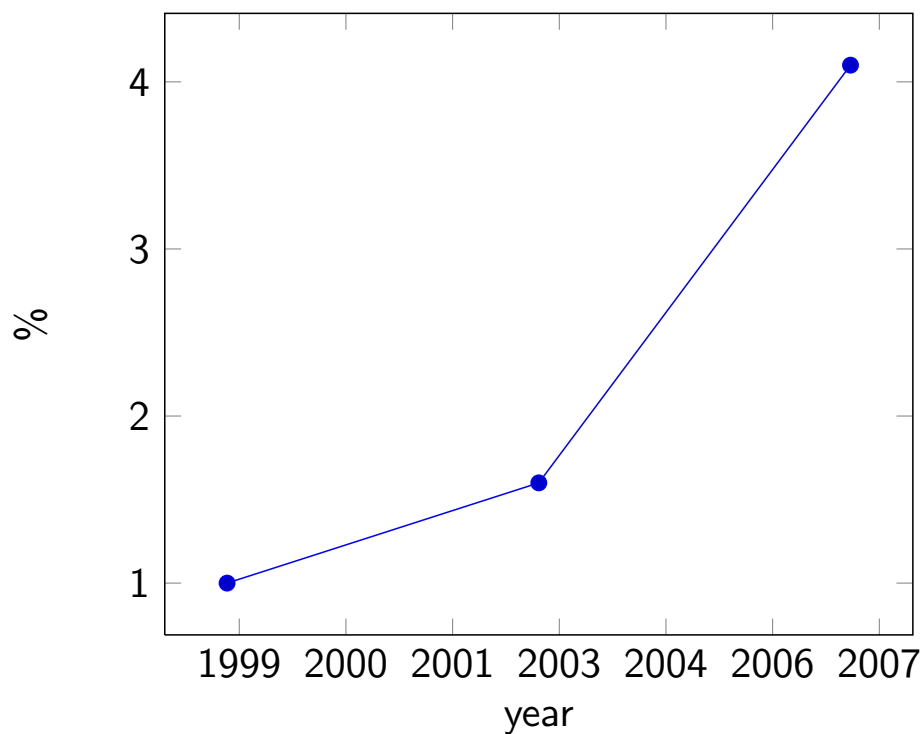
Electoral results: Norway



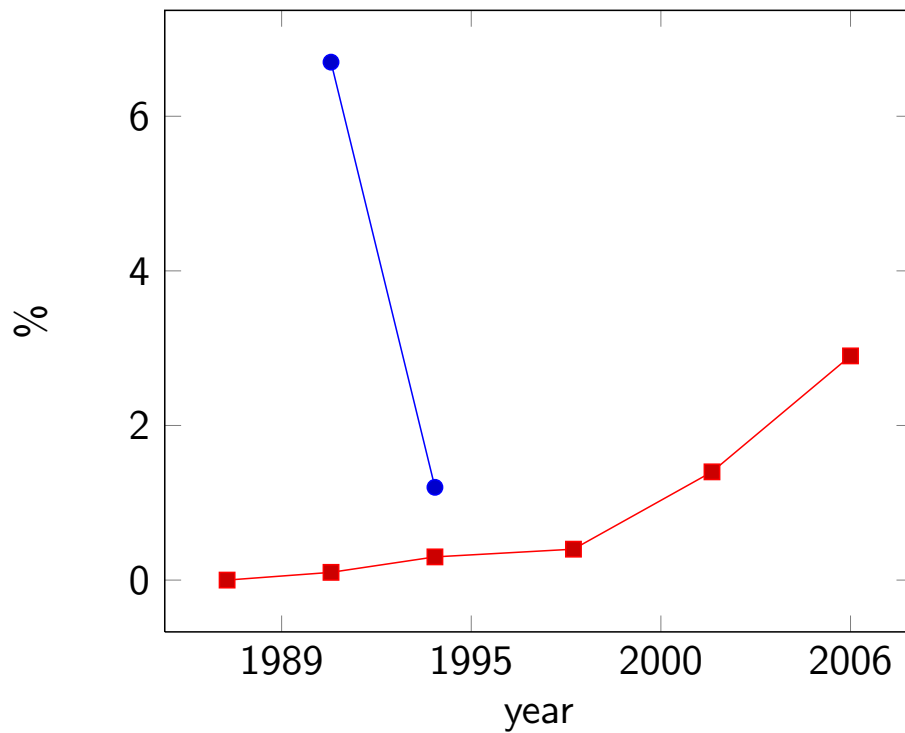
Electoral results: Denmark



Electoral results: Finland (True Finns)



Electoral results: Sweden



Voters

- ▶ The usual suspects
- ▶ Cross-cleavage appeal, highly stabilised in NO
- ▶ Marginalised in SE
- ▶ FI: ?

Summary

- ▶ Extreme Right in Germany
 - ▶ Tainted, isolated, marginalised
 - ▶ Largely unsuccessful
- ▶ Scandinavia: very diverse
 - ▶ Norway: Extremely well established, not very extreme
 - ▶ Denmark: Very populist, stable
 - ▶ Sweden: Highly unstable, marginalised
 - ▶ Finland: Tiny, extreme?

Class question

- ▶ Describe, in your own words, the situation of the SD before the Parliamentary Election in September 2010
- ▶ Why
 - ▶ Are the PPs (Norway, Denmark) and the DF successful?
 - ▶ Is there no viable Extreme Right in Sweden and Finland?